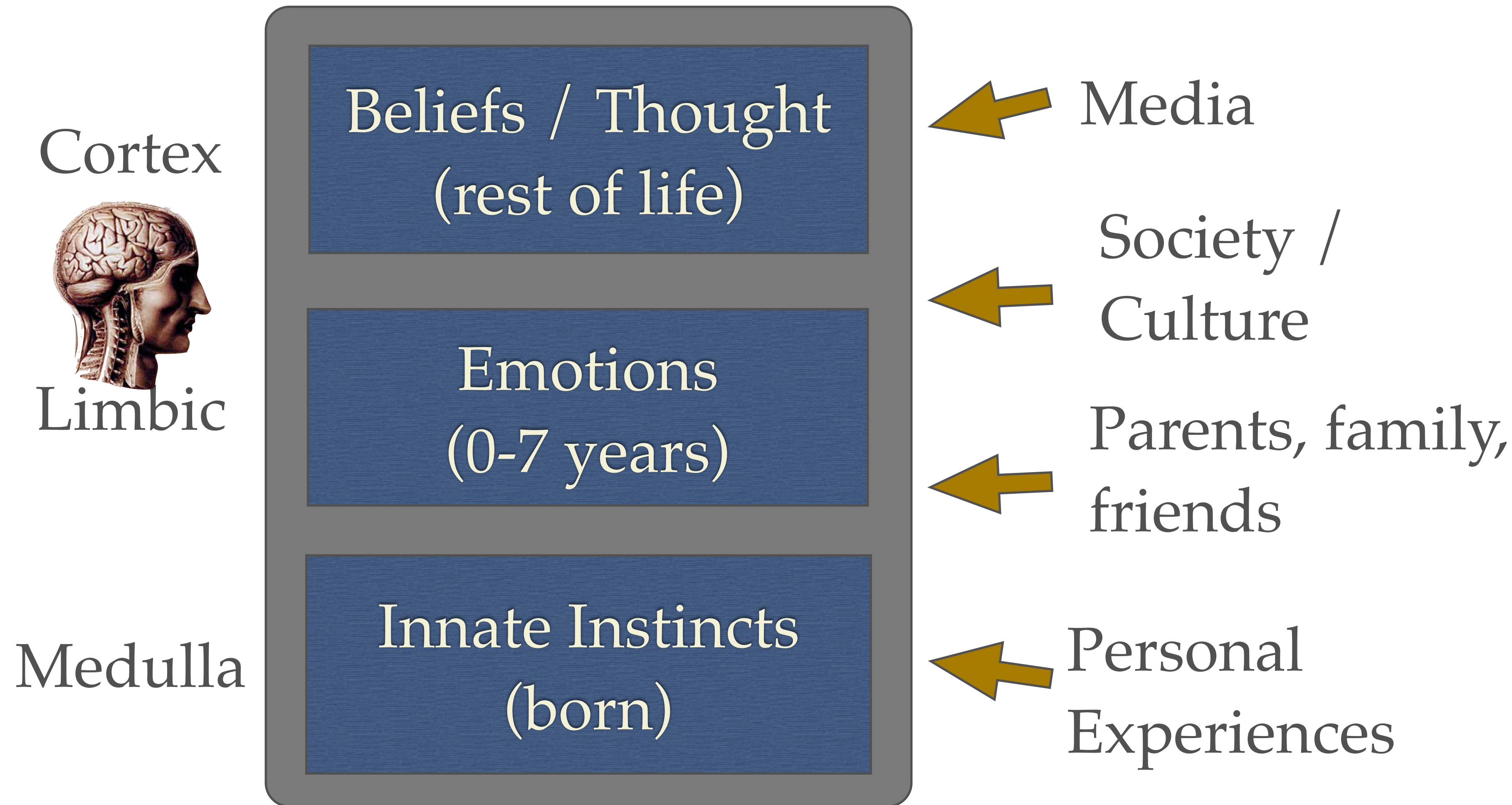


# The Phusikoi Project

Gino Yu

Hong Kong Polytechnic University

# Creation of a Personal Reality (Beliefs)





# Objective

- Modalities to support people going through awakening experiences
- Help those who have undergone awakening to better integrate and develop their “realised abilities”
- Explore human potential





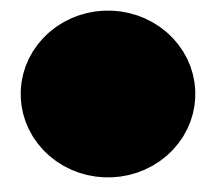
# Phusikoi Project

- Infrastructure
  - Database of people with realised abilities
  - Global network of research laboratories
- Theoretical Framework
- Funding network



# Emerging Proud



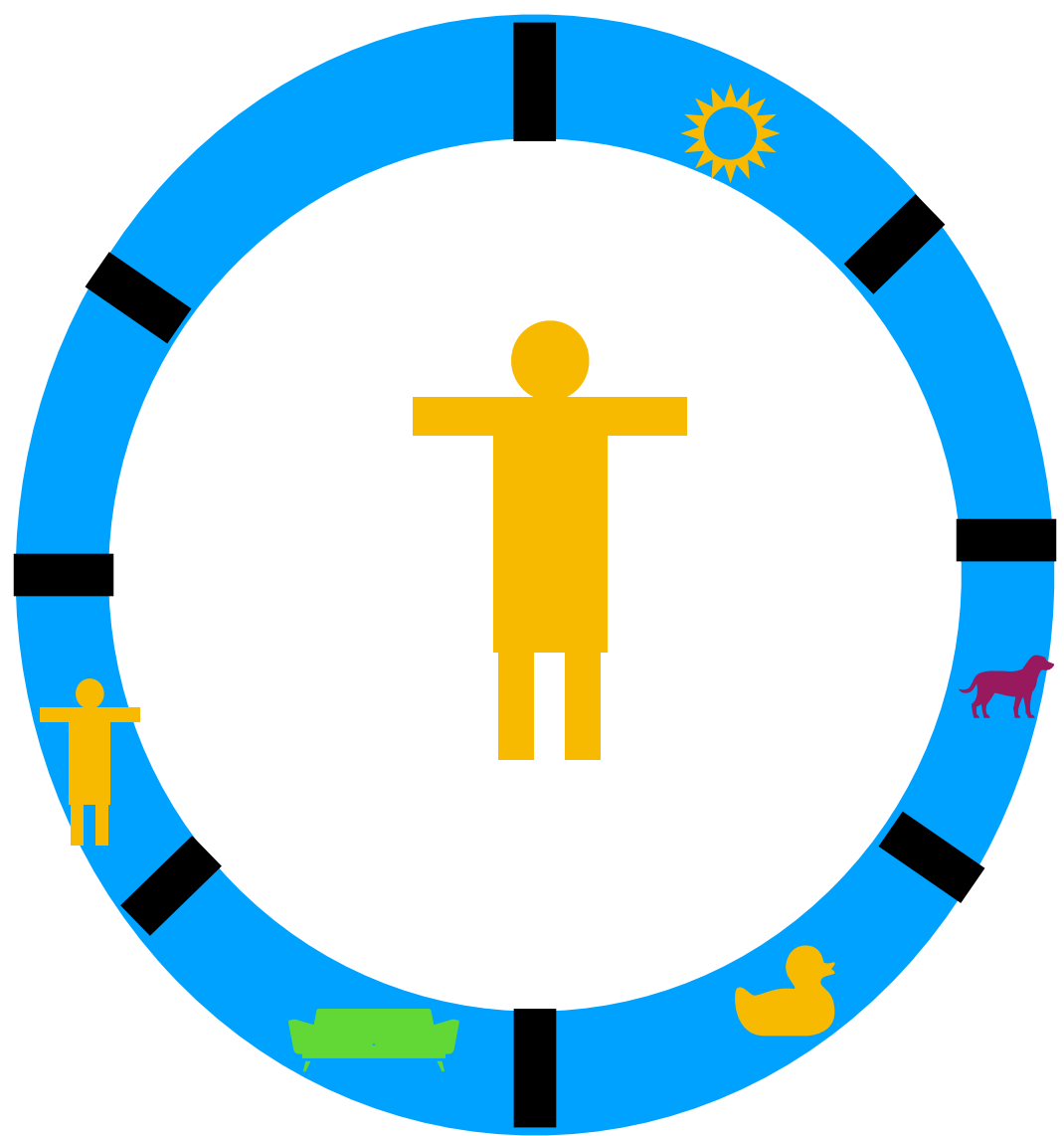




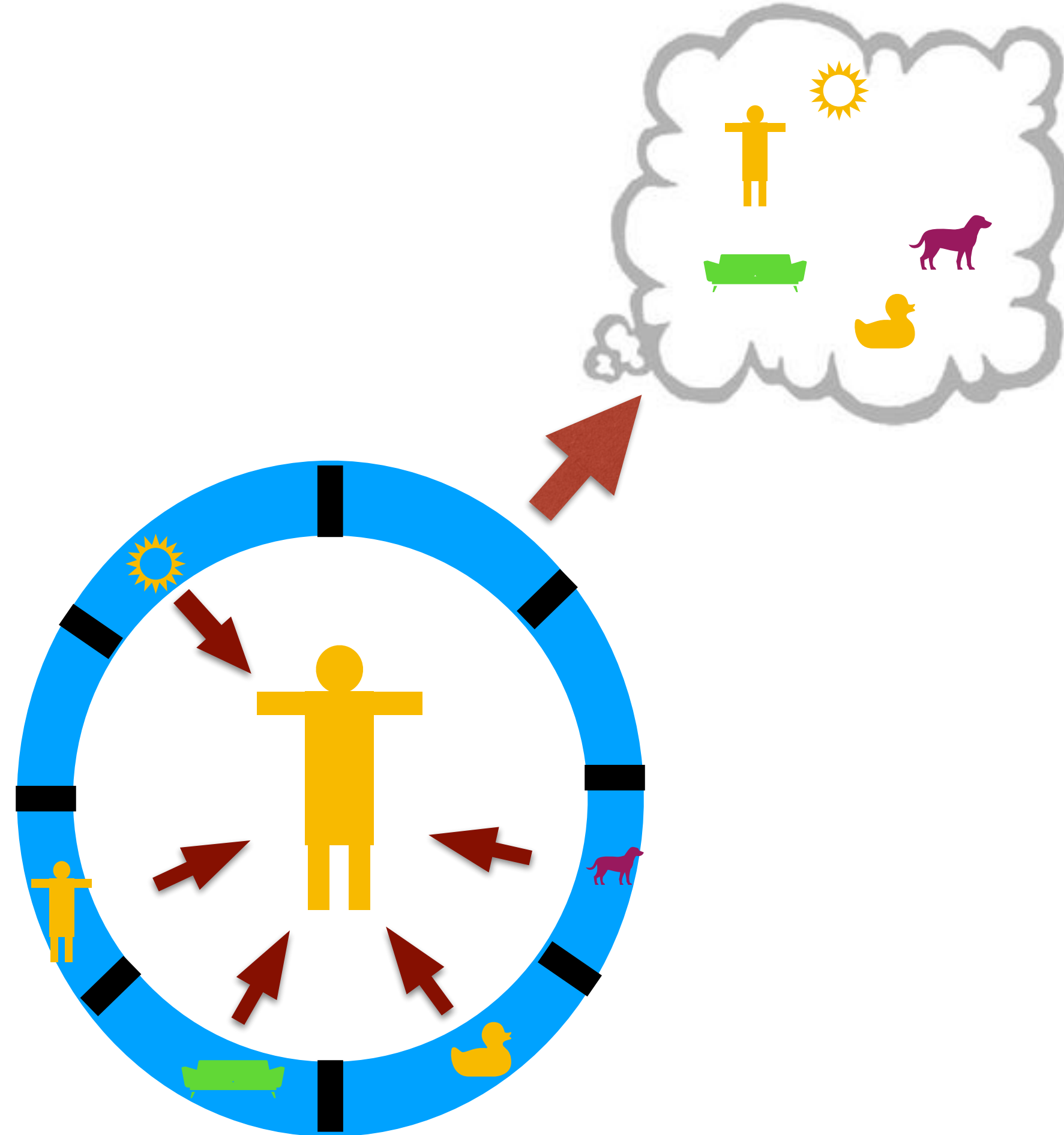








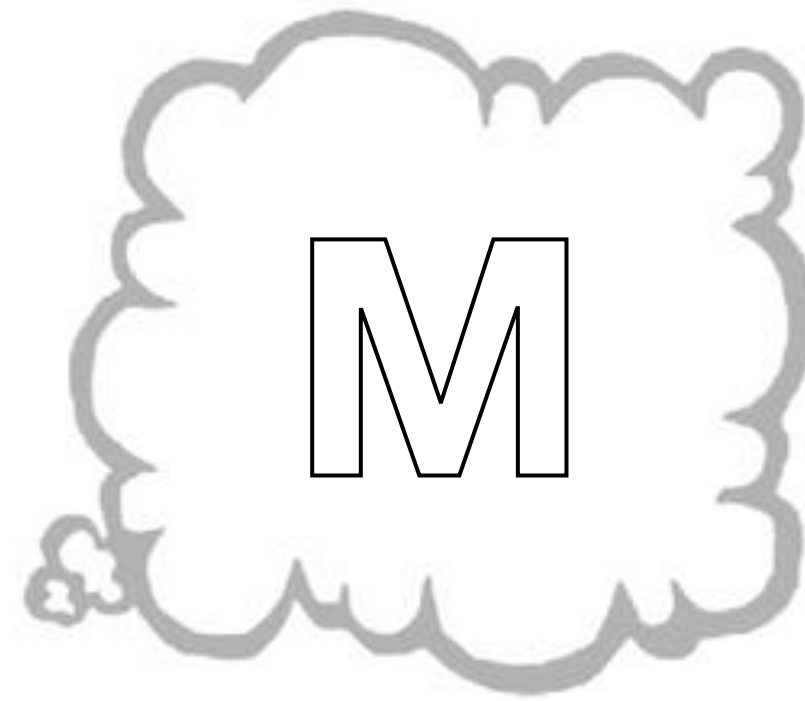
# Development of Symbolic Consciousness







# Radical Epistemology



比量

S s  
u g  
r r  
o u n d i  
n

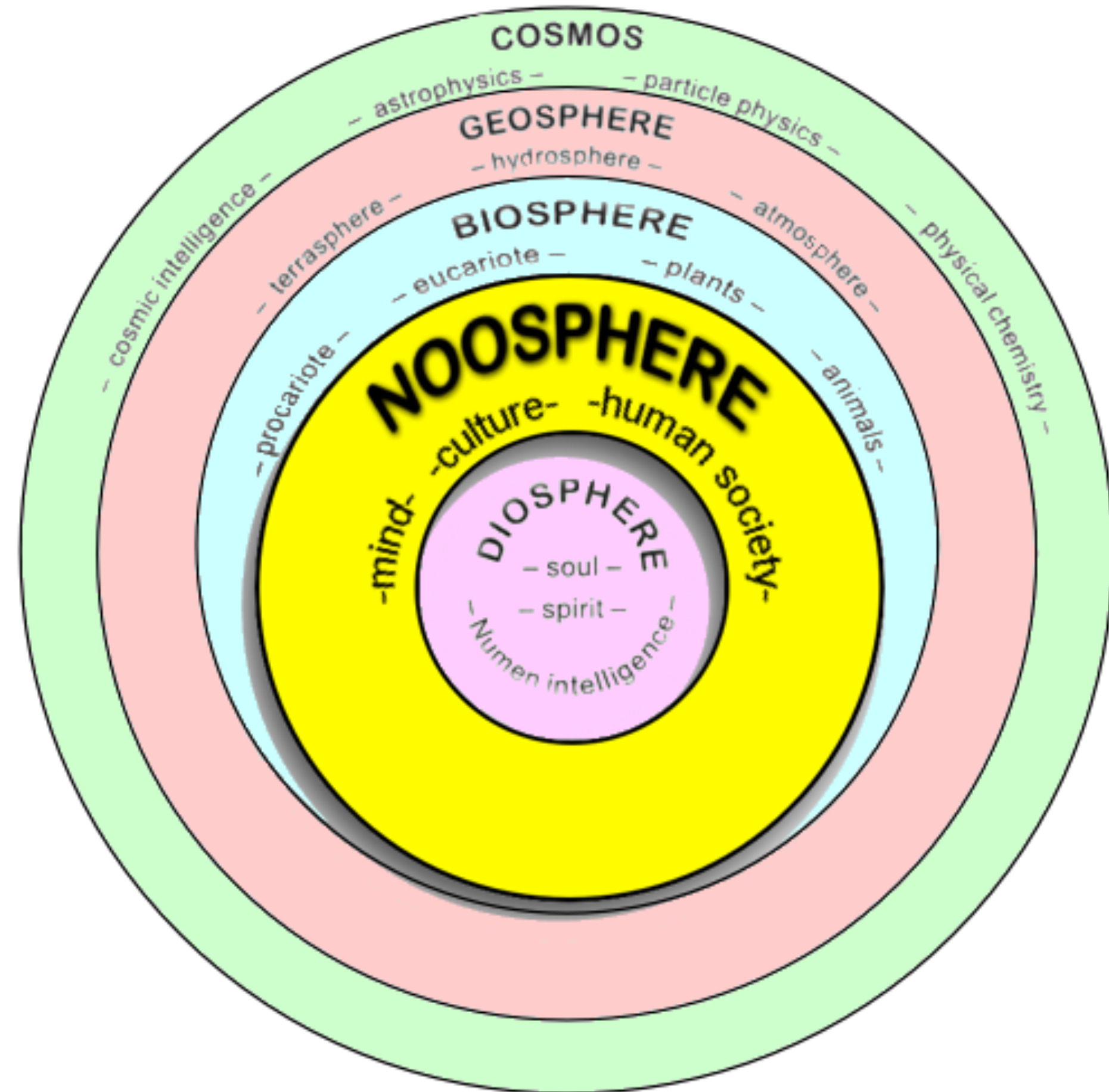
**M**

现量

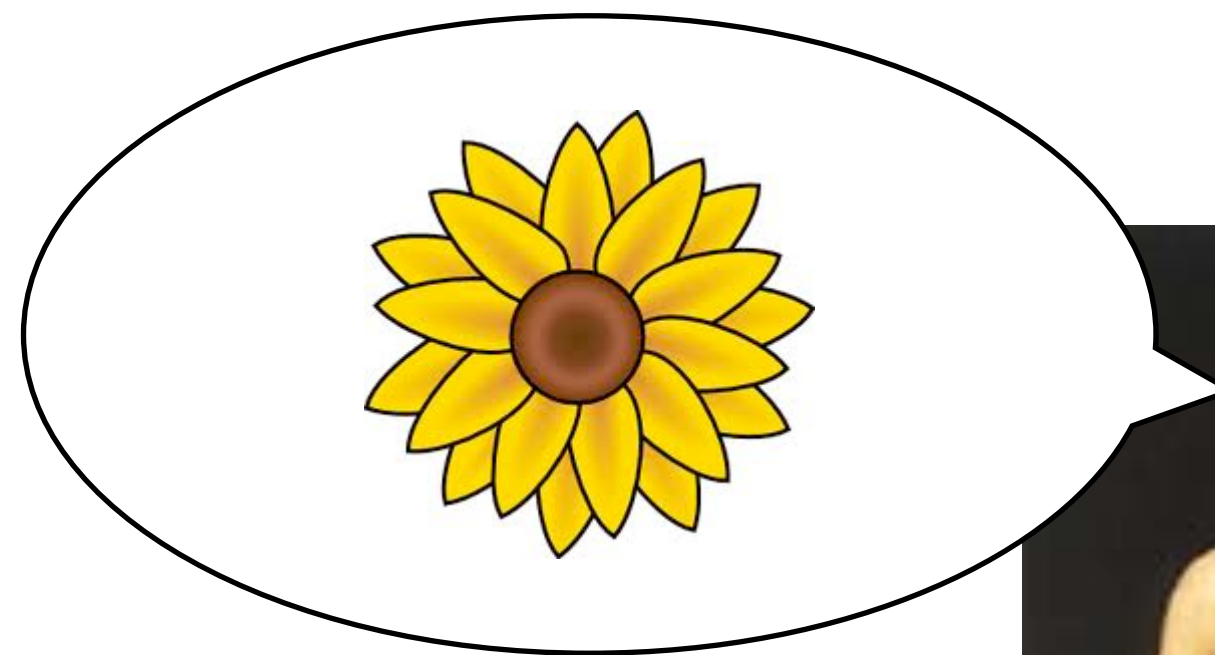
# Noosphere



**Pierre Teilhard de Chardin**



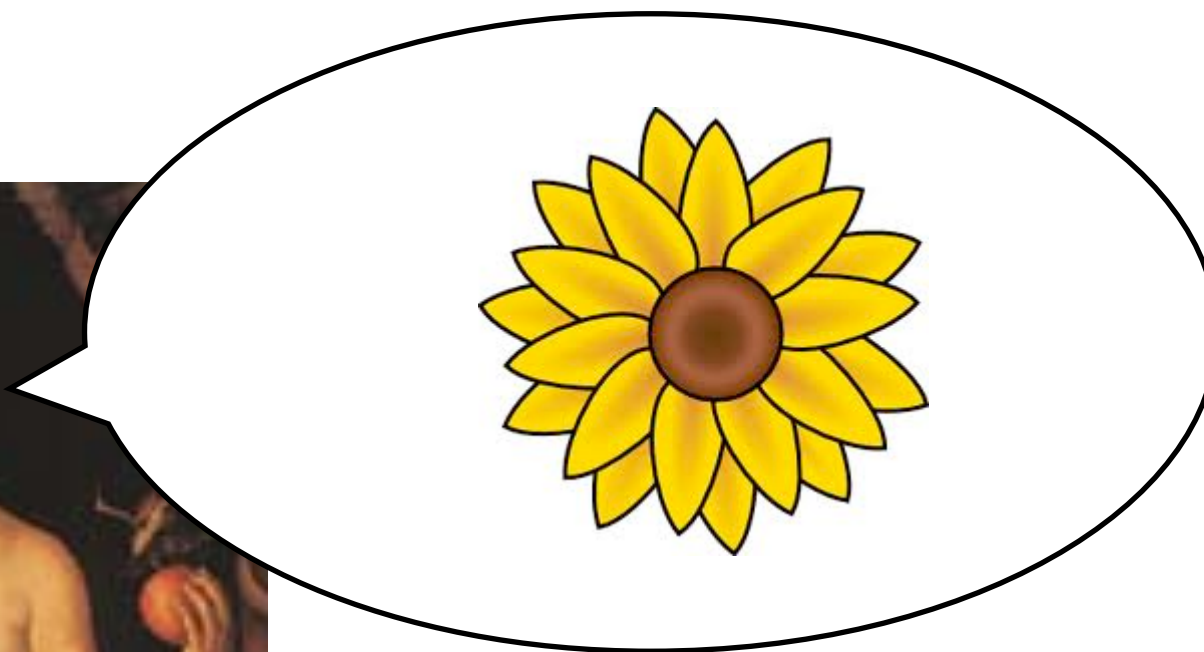
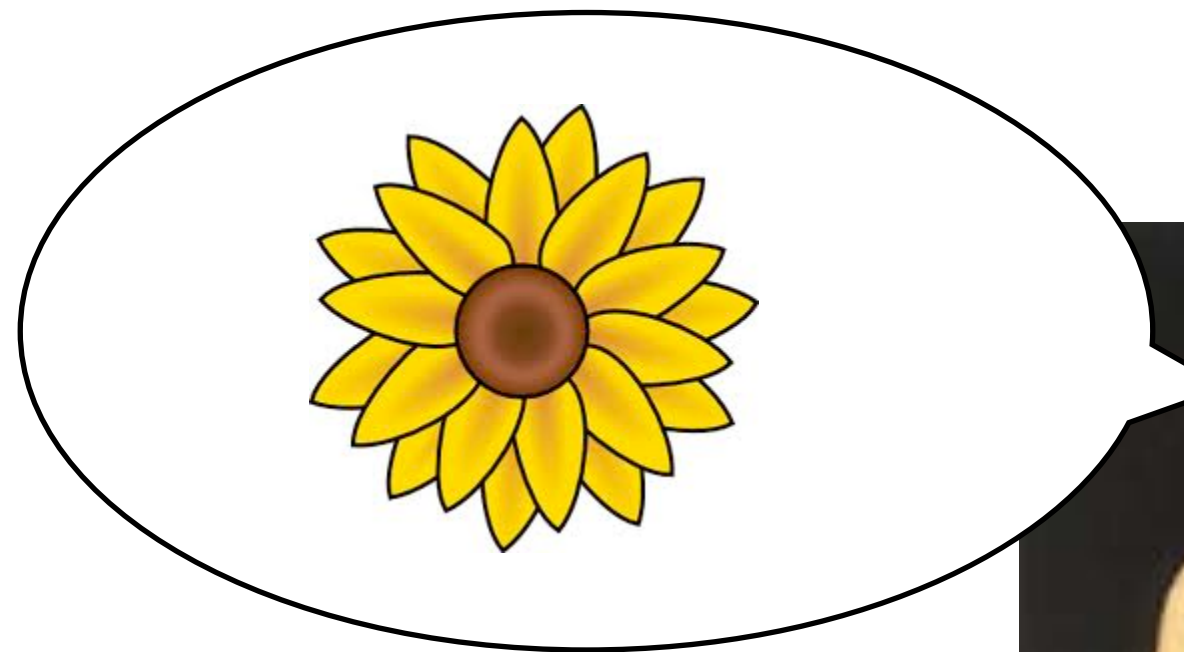
# Origins of the Mental World



Phusis (Nature)

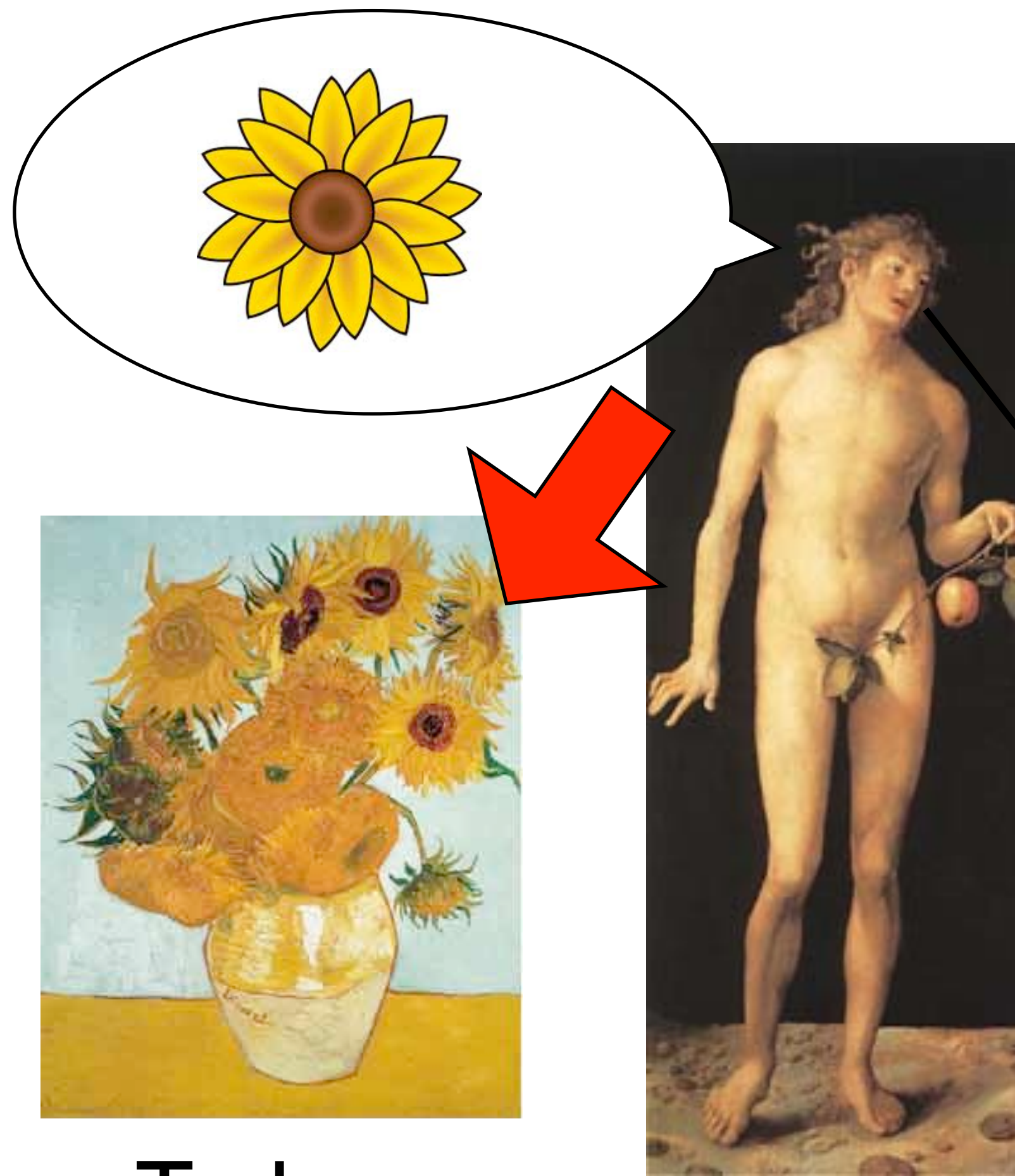


# Origins of the Mental World





# Phusis vs. Techne



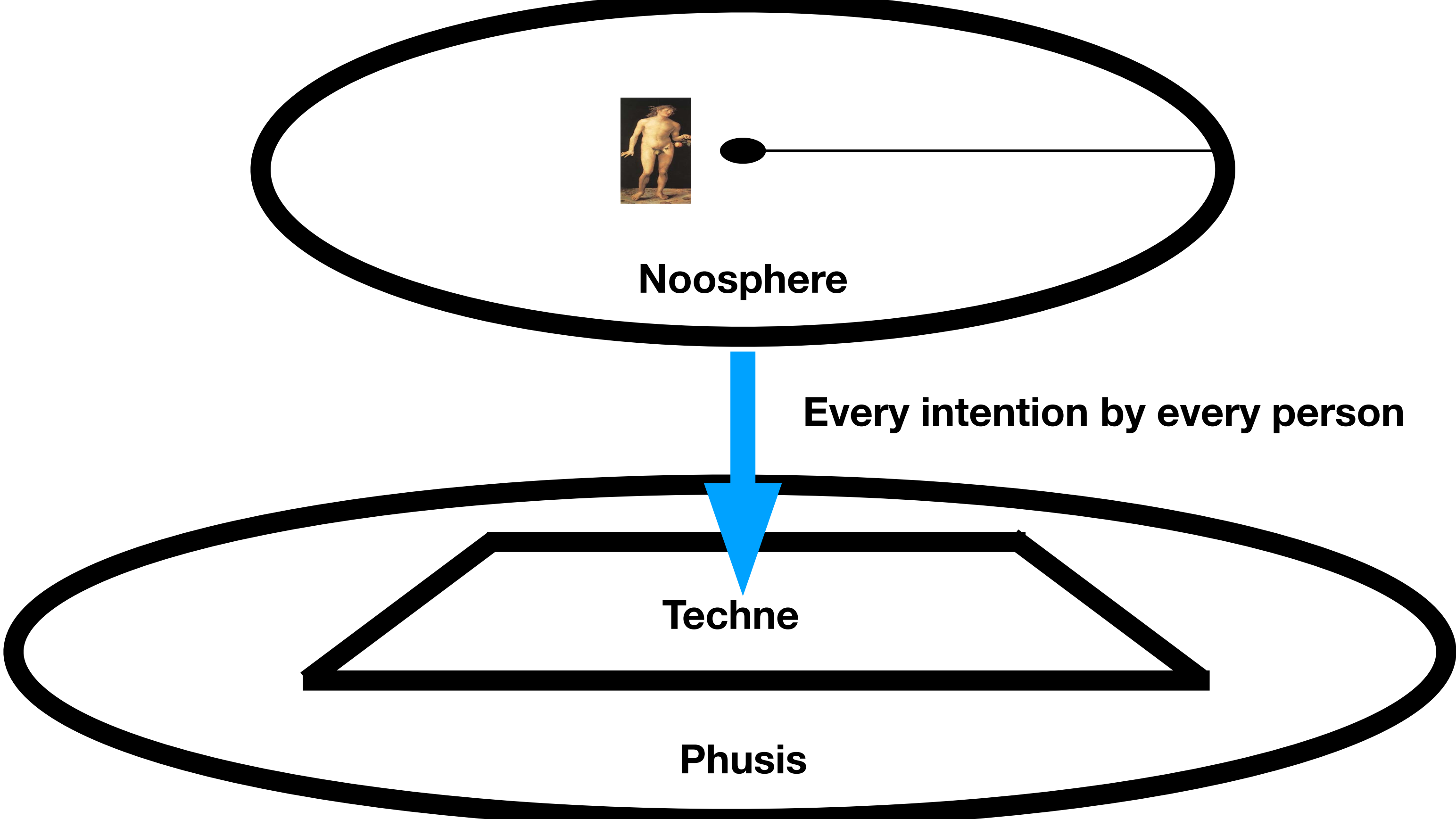
Techne



Phusis (Nature)







**Noosphere**

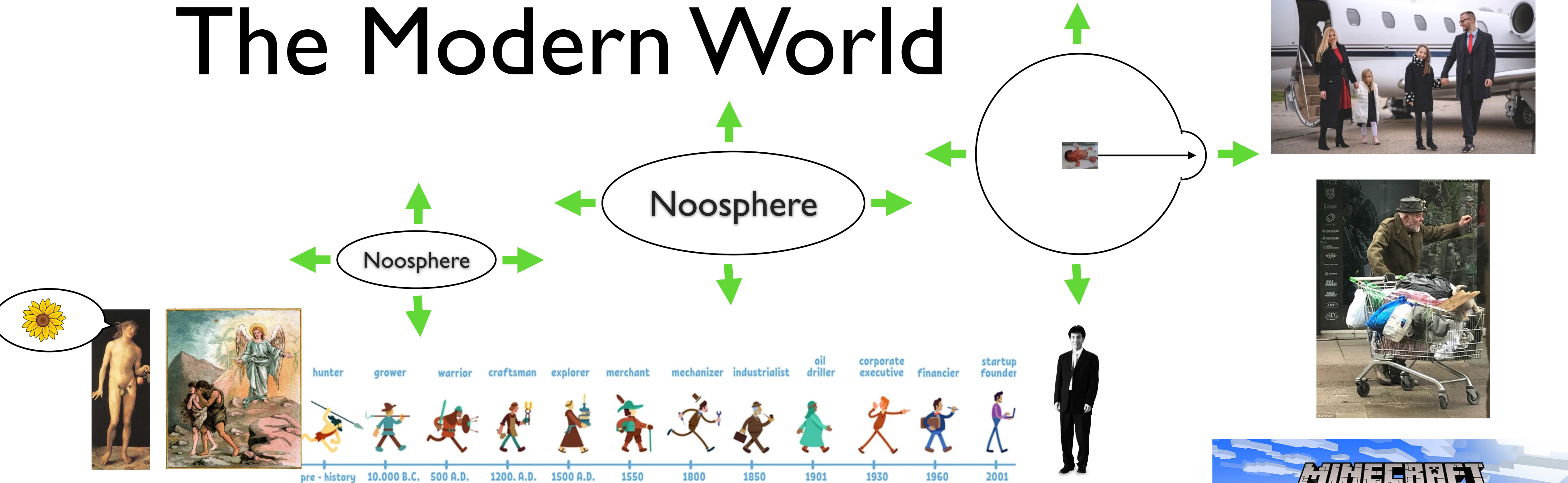
**Every intention by every person**

**Techne**

**Phusis**



# The Modern World



The Material World

Physis



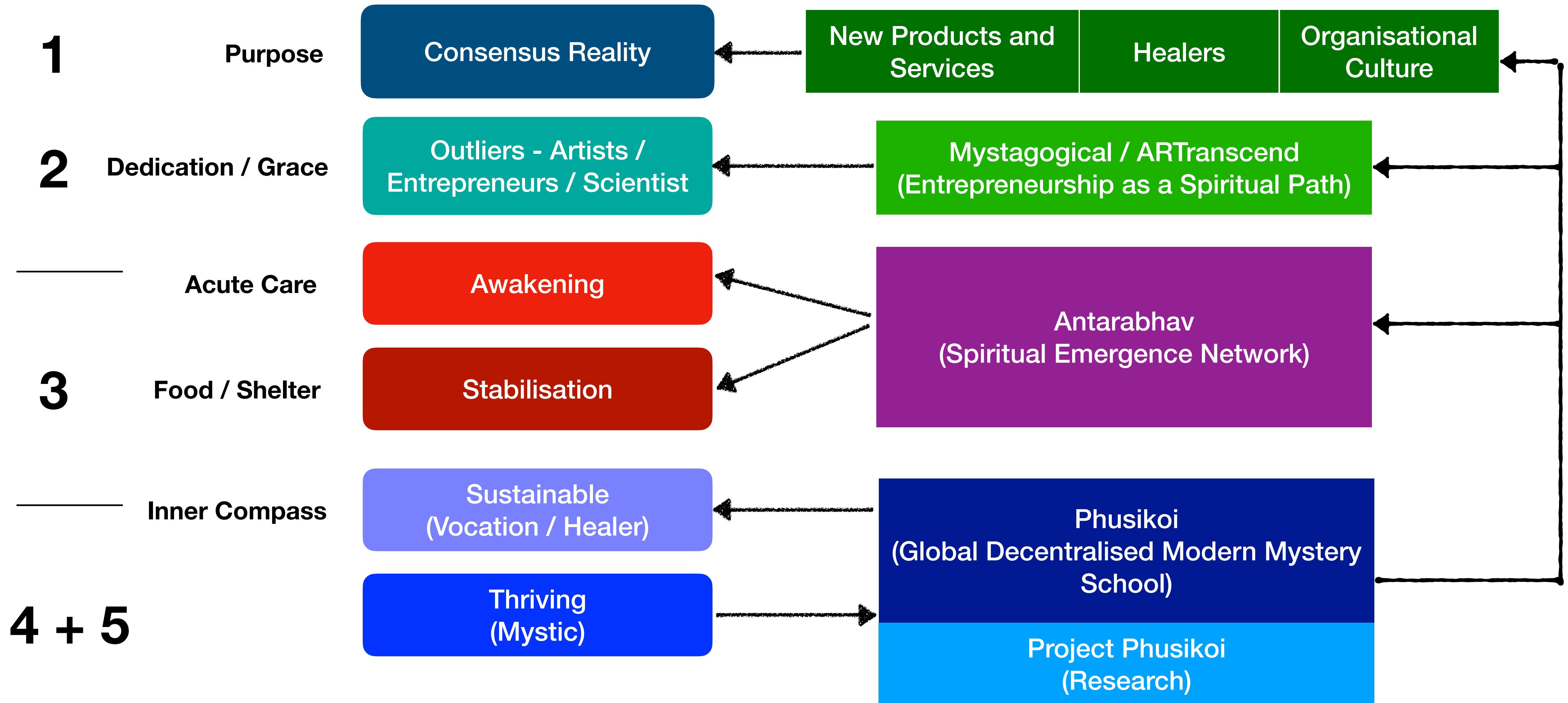
Consensus Reality  
(aka the modern world)



# Skills and Stages

	<b>Develop Capacity</b>	<b>“Success” in Modern Life, Parents, Finding Purpose</b>
	<b>Focused Commitment</b>	<b>Entrepreneurship, PhD, Marriage Discipline, Perseverance</b>
	<b>Awakening</b>	<b>Interoception (qigong, meditation), Grounding, Forgiveness</b>
	<b>Refine Intuition</b>	<b>Intention, Emergence, Recalibration, Non-attachment, Surrender</b>
	<b>Human Potential</b>	<b>?</b>

# Structure for Supporting the Development of Human Potential

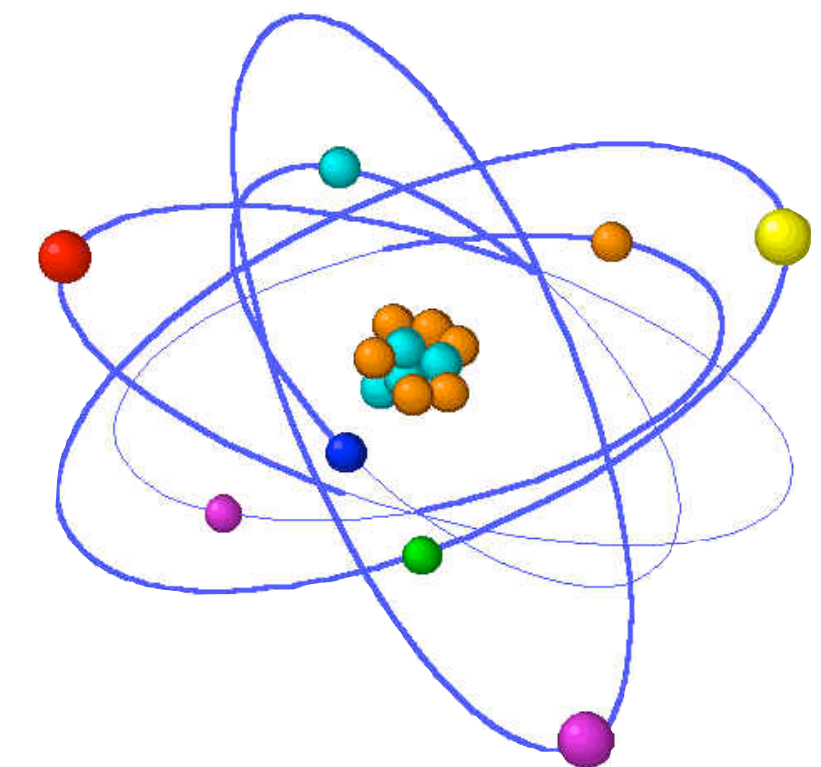
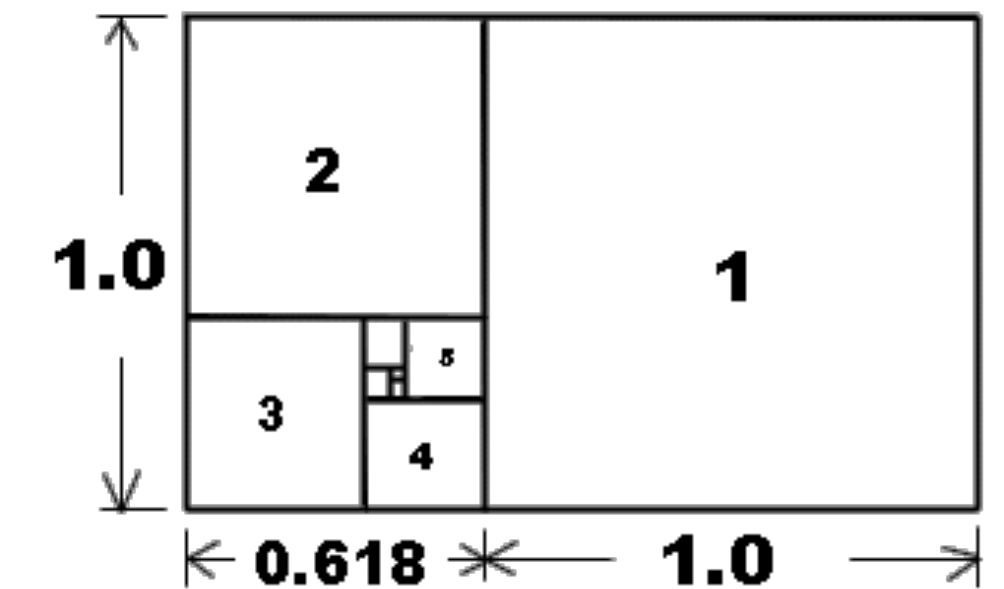




# Phusikoi - Presocratic “Naturalists”

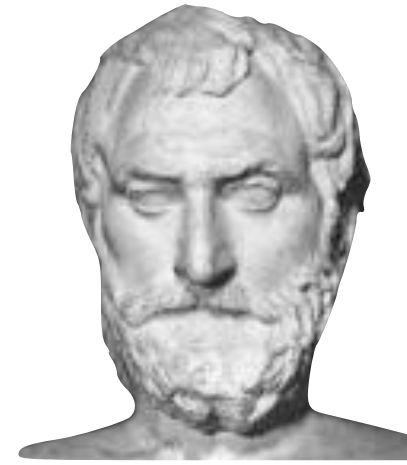


- Invented the idea of science and philosophy
- Established basic language and approach
- Describe, organize, and explain the universe and its contents
- Use of rational argument vs. story



# A Few of the Phusikoi

- Thales

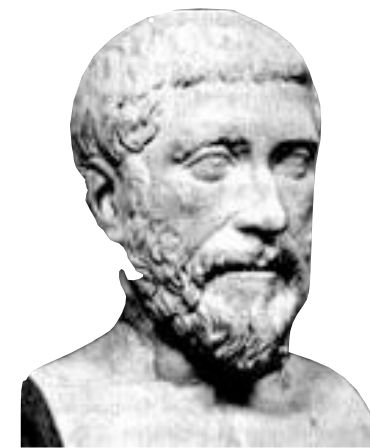


- Anaximander



- Anaximenes

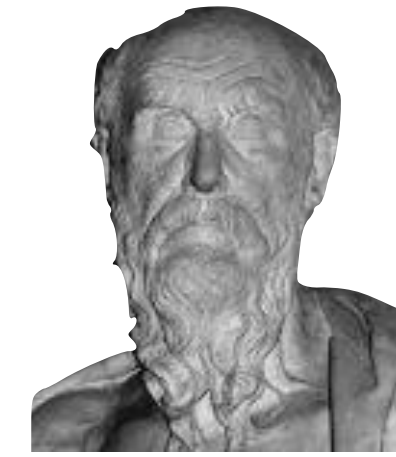
- Pythagoras



- Alcmaeon

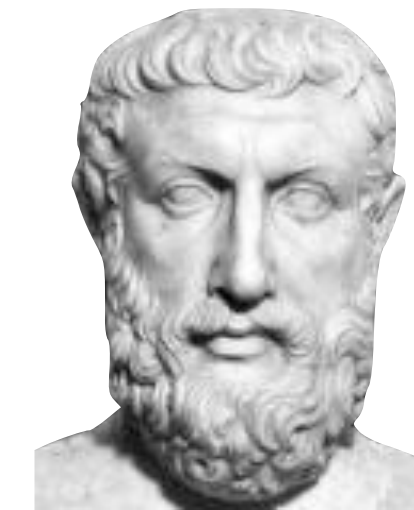
- Xenophanes

- Heraclitus



- Parmenides

- Xeno



- Democritus

- Empedocles



- Melissus

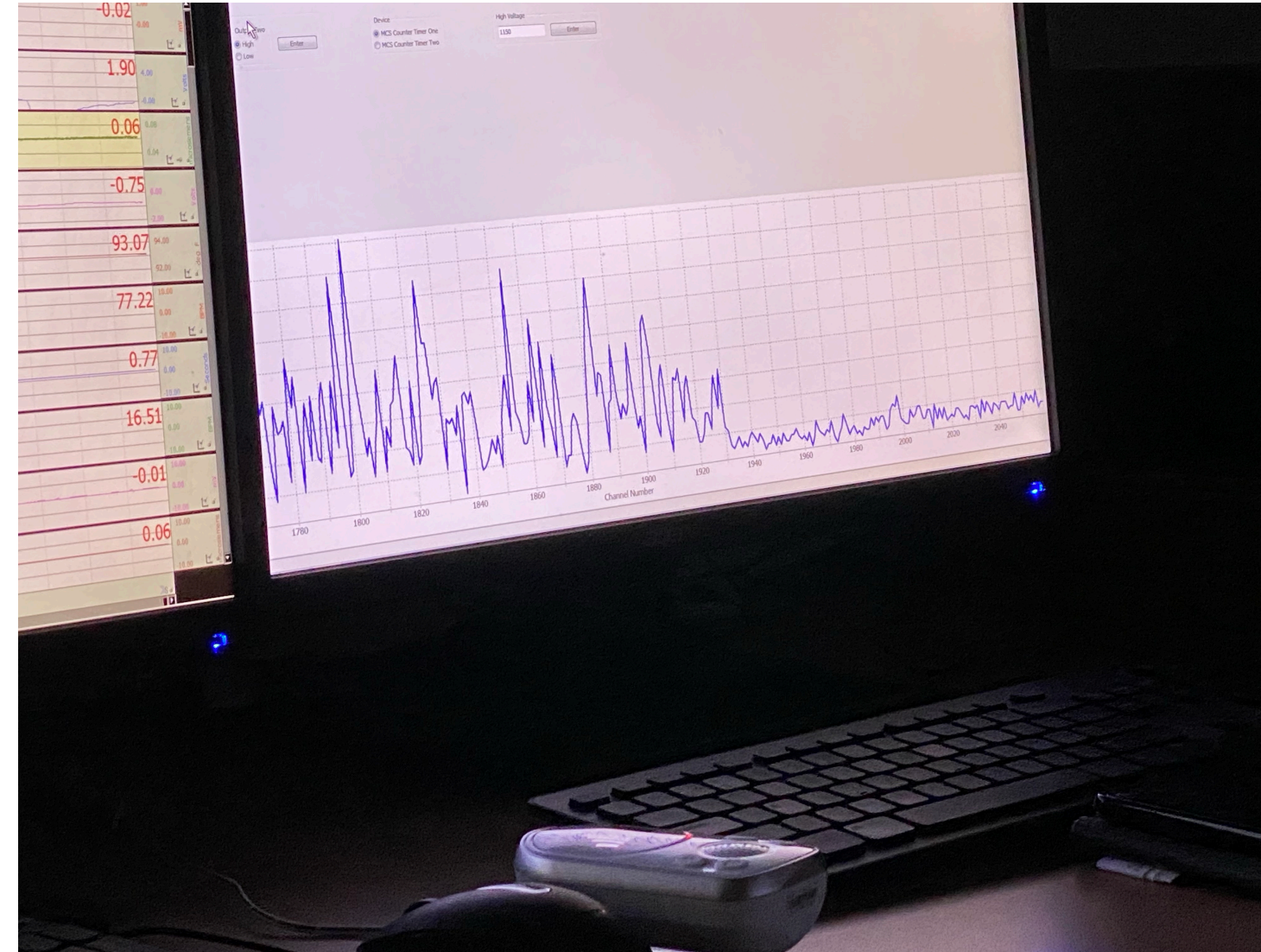


# Alain Forget





# Edd Edwards



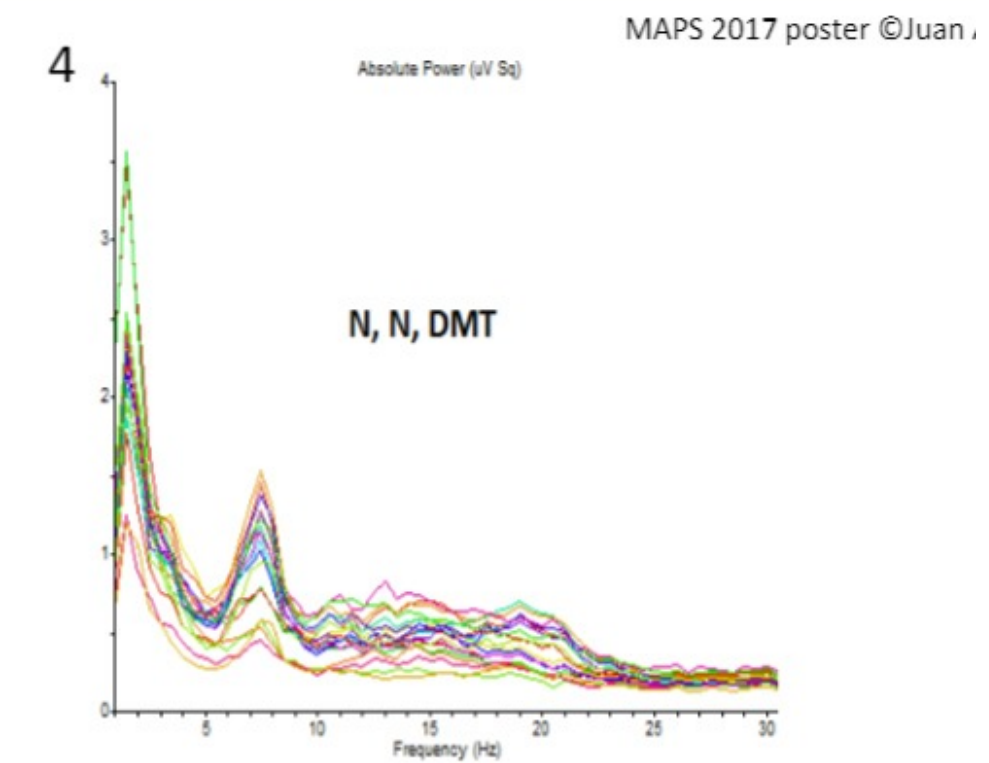
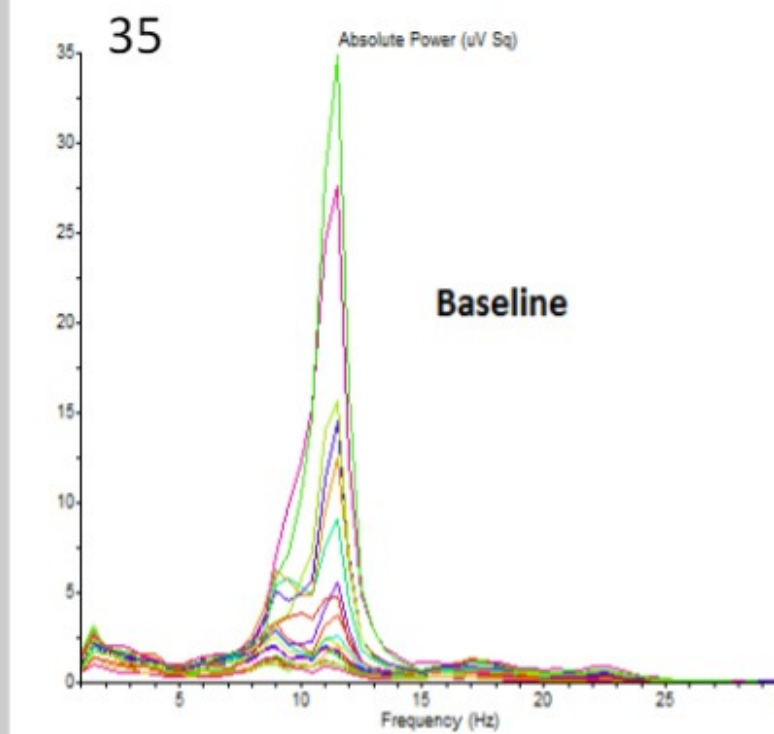
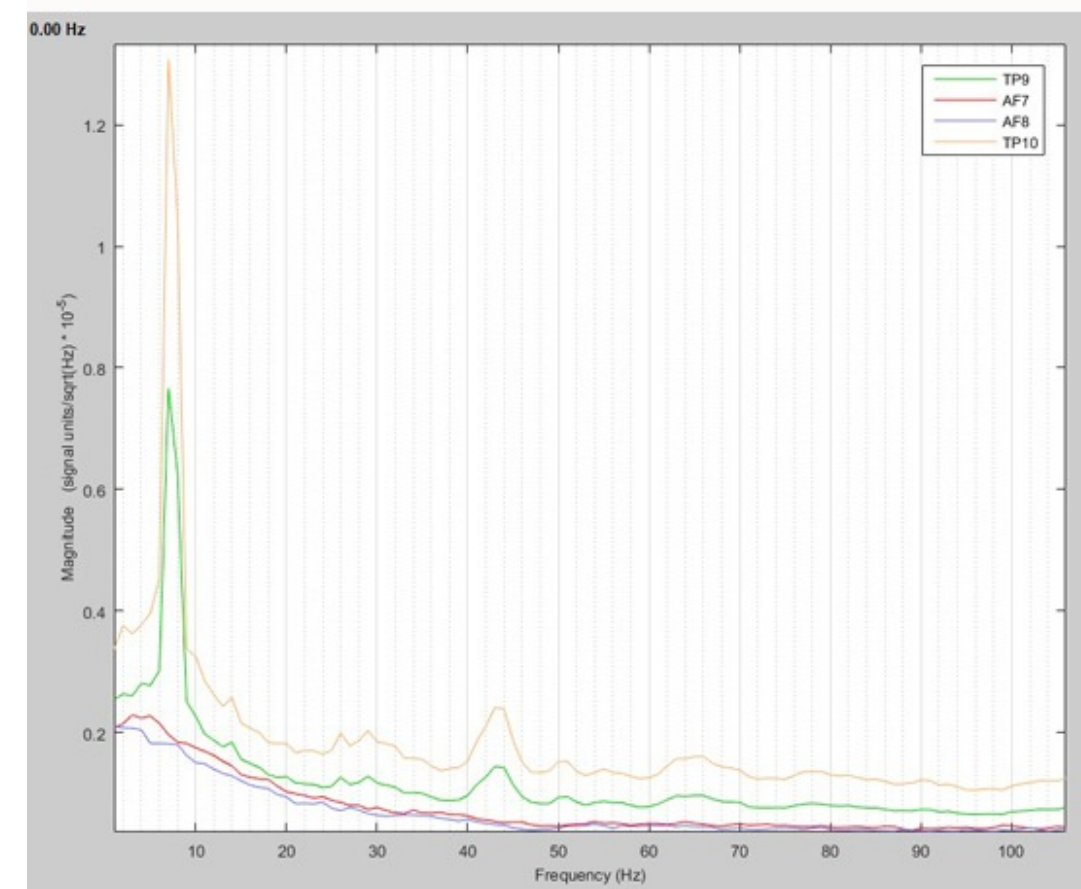


# Stephen Altair



Stephen

DMT





# Gianni Martire



## Introducing Physical Warp Drives

Alexey Bobrick, Gianni Martire

Advanced Propulsion Laboratory at Applied Physics, 477 Madison Avenue, New York, 10022, U.S.

E-mail: [alexey.bobrick@appliedphysics.org](mailto:alexey.bobrick@appliedphysics.org)

September 2020

**Abstract.** The Alcubierre warp drive is an exotic solution in general relativity. It allows for superluminal travel at the cost of enormous amounts of matter with negative mass density. For this reason, the Alcubierre warp drive has been widely considered unphysical. In this study, we develop a model of a general warp drive spacetime in classical relativity that encloses all existing warp drive definitions and allows for new metrics without the most serious issues present in the Alcubierre solution. We present the first general model for subluminal positive-energy, spherically symmetric warp drives; construct superluminal warp-drive solutions which satisfy quantum inequalities; provide optimizations for the Alcubierre metric that decrease the negative energy requirements by two orders of magnitude; and introduce a warp drive spacetime in which space capacity and the rate of time can be chosen in a controlled manner. Conceptually, we demonstrate that any warp drive, including the Alcubierre drive, is a shell of regular or exotic material moving inertially with a certain velocity. Therefore, any warp drive requires propulsion. We show that a class of *subluminal, spherically symmetric* warp drive spacetimes, at least in principle, can be constructed based on the physical principles known to humanity today.

Submitted to: *Class. Quantum Grav.*

### 1. Introduction

The classical-relativistic Alcubierre drive solution allows timelike observers to travel superluminally, although at the expense of using material with negative rest-mass energy (Alcubierre 1994); for recent reviews see also (Lobo 2007, Alcubierre & Lobo 2017). This solution is given by the following asymptotically-flat metric:

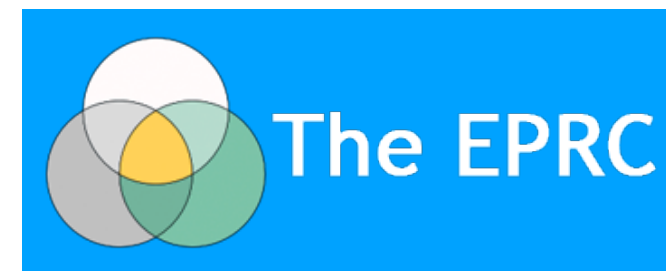
$$ds^2 = -c^2 dt^2 + (dx - f(r_s)v_s dt)^2 + dy^2 + dz^2, \quad (1)$$

where  $r_s = \sqrt{(x - v_s t)^2 + y^2 + z^2}$ . The metric describes a spherical warp bubble (a region deviating from the flat metric) moving along the  $x$ -axis with an arbitrary velocity  $v_s$ , which may be larger or smaller than the speed of light  $c$ .

The shape function  $f(r_s)$ , present in the metric, defines the size and profile of the warp bubble. For large distances  $r_s$  from the bubble,  $f(r_s) = 0$  and the spacetime is flat. For small distances,  $r_s \approx 0$ , the shape function  $f(r_s) = 1$ , and the metric describes

# Global Network of Research Laboratories

- Established Laboratories
- Data collection facilities
- Network of researchers
- Retired academics



ARTICLE IN PRESS

Explore xxx (xxxx) xxx



Contents lists available at [ScienceDirect](#)

EXPLORE

journal homepage: [www.elsevier.com/locate/jsch](http://www.elsevier.com/locate/jsch)



## Spiritual awakening and transformation in scientists and academics

Marjorie Woollacott<sup>a,1,\*</sup>, Anne Shumway-Cook<sup>b</sup>

<sup>a</sup> Institute of Neuroscience, University of Oregon, USA

<sup>b</sup> Department of Rehabilitation Medicine, University of Washington, USA

### ABSTRACT

The purpose of this study was to document both quantitatively and qualitatively the characteristics of spiritual awakenings and their transformational effects in scientists and academics who reported having experienced this phenomenon; it also aimed to explore barriers these individuals perceived to sharing their experiences with others within society.

**Methods:** An interview questionnaire was used to collect detailed descriptions of both the physical and metaphysical experiences of 54 scientists and academics having had a spiritually transformative experience (STE) (e.g., spontaneous energetic awakenings, awakenings occurring through near-death experiences (NDEs), and through spiritual practices).

**Results and Conclusions:** Participants reported the STE as a mystical experience involving feelings of expansion (including conscious awareness leaving the body), energy rising up the spine, a sense of being enveloped in light, love or part of a unified energetic field. Principle triggers for these experiences included concentrating on spiritual matters, the presence of a spiritually developed person, and intense meditation or prayer. Transformational changes in participants included increased sensory sensitivity, creativity, and changes in beliefs, including a desire to serve others, a sense of unity with all, and the immortality of the spirit. Effects on career ranged from incorporating their new worldview and spiritual insights into the way they interacted with others within their current career, to radically changing their career to focus on questions related to the fundamental nature of consciousness or to serve others from this new perspective. Among barriers to sharing experiences, participants noted their concern that they would be misunderstood or ridiculed by others.



# Routes

“Natural”



Practice /  
Transmission



Spontaneous Awakening /  
Psychedelics / Near Death



Realised Abilities

Forms of  
Knowing

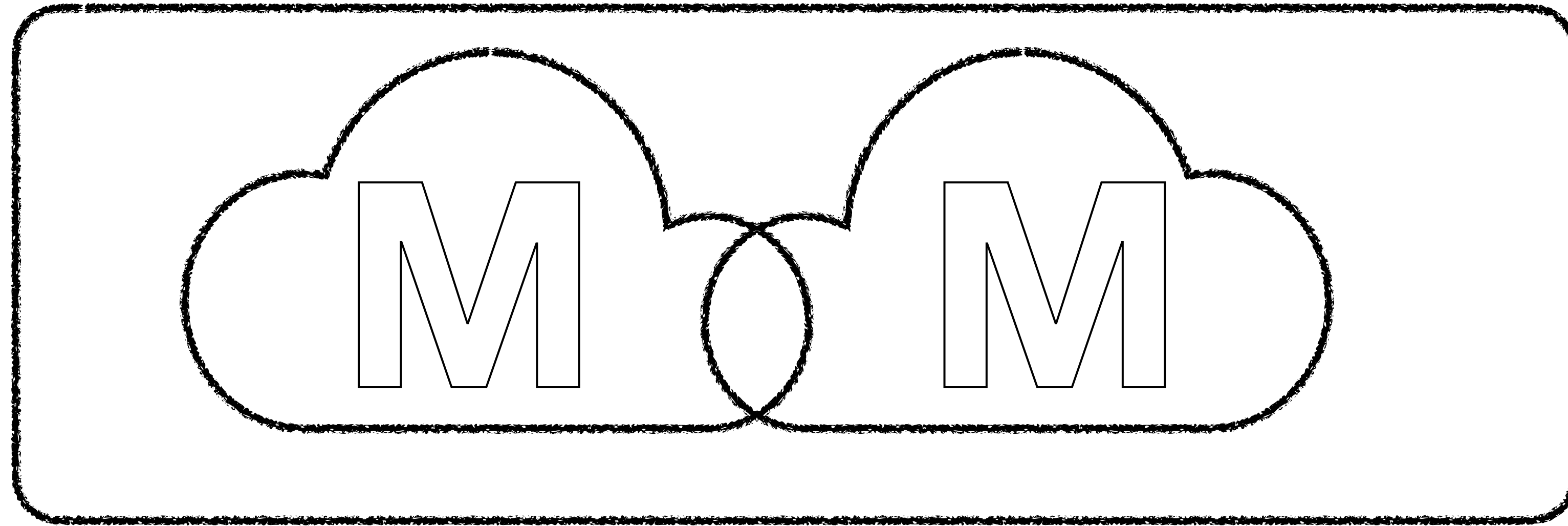
Affect Phenomenology /  
Transmit “energy”

Telekinesis

Self Regulate Pain  
and Temperature



# Container of Engagement



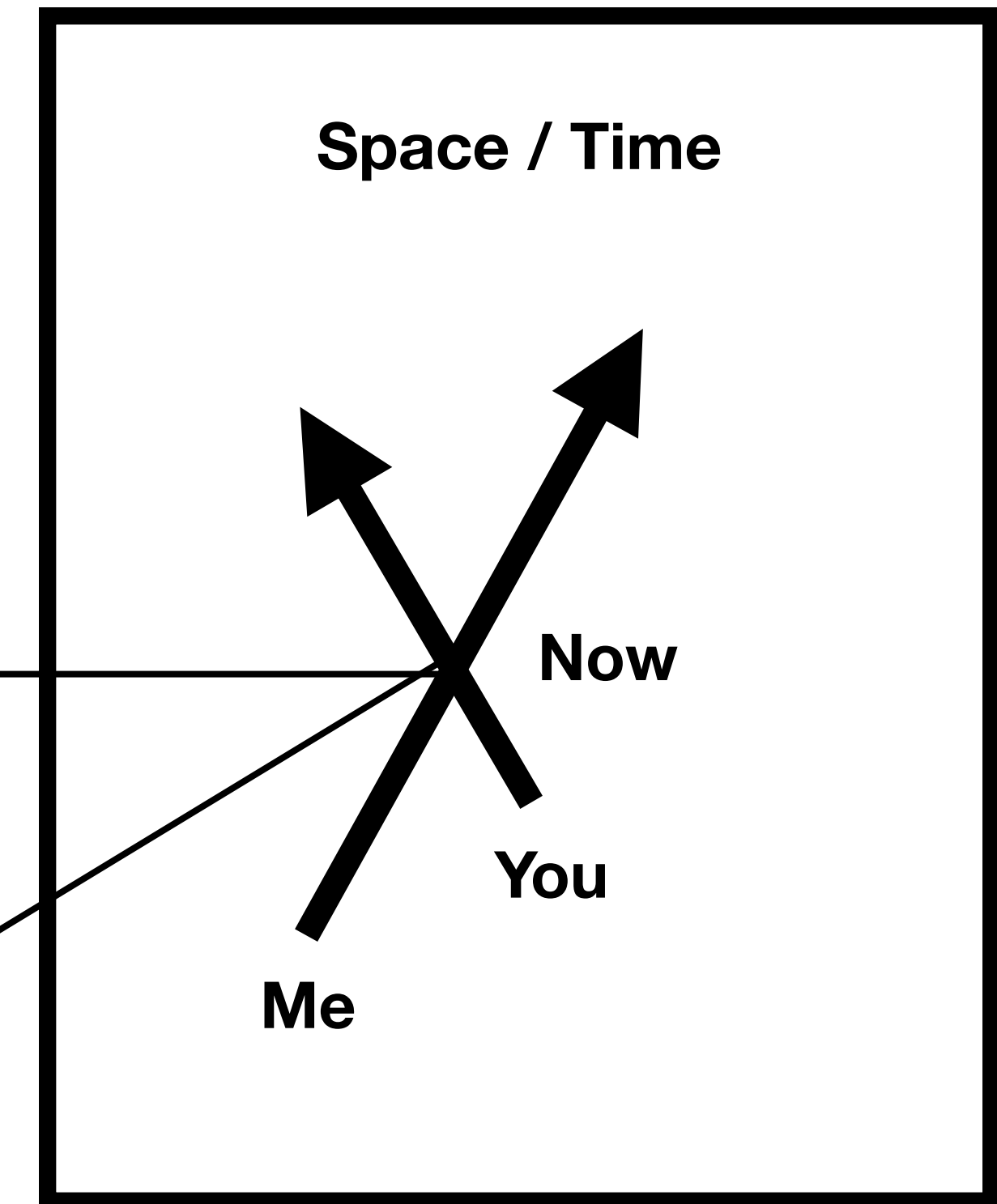
S  
u  
r  
r  
o  
u  
n  
d  
i  
n  
g

→ **M** ←

↑

← **M** →

↑





# Progress Thus Far

- Growing community
- Embodied vs. conceptual knowledge
- Interventions for people going through spiritual emergencies
- New methods of engagement that leverage different gifts
- Framework for second person research methods



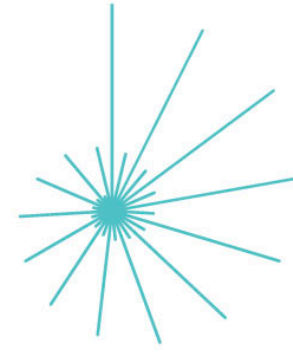




# Funding in the Space



MIND & LIFE  
INSTITUTE



JOHN TEMPLETON  
FOUNDATION



Fetzer  
Institute



Bigelow Institute for Consciousness Studies



evolve  
VENTURES • FOUNDATION





# 2023 Plans

- Continuing to build infrastructure
  - People
  - Places to convene
- Gatherings around the World
  - Europe in Jan, India in March, US in April / May
  - Festival in Arizona in the Fall
- “Travelling Circus”
  - Mystics traveling together to meet with high-net-worth individuals who want to do something in this space





# The Ask

- Researcher / research lab
- “Realised” abilities
- Networks / communities
- Collaborators
  - Post mid-life
  - Know why you are here
  - Money no longer an issue